

PRIME DAILY

March 21, 2025



Markets at Highest Level in Over a Month: Poised at Critical Resistance Threshold

US equity markets retreated Thursday as materials and consumer staples sectors led the decline. Investor confidence has waned in recent weeks following economic indicators suggesting both economic activity and consumer sentiment are cooling amid the Trump administration's implementation of reciprocal trade tariffs.

February's Conference Board Leading Economic Index (LEI), designed to forecast economic turning points, declined 0.3% to 101.1, further signalling potential near-term economic challenges.

The US dollar stabilized Friday after posting its strongest single-day performance in three weeks on Thursday, bolstered by the Federal Reserve's cautious stance on interest rate reductions.

Thursday saw US stocks close marginally lower following a session of fluctuation between gains and losses. Investors carefully weighed the latest economic data and Federal Reserve policy guidance against ongoing tariff concerns.

Asian markets traded within narrow ranges Friday as investors cautiously awaited Donald Trump's next trade policy announcements. This tension follows a week dominated by central bank meetings that heightened market anxiety.

Gold remained just \$10 below Thursday's record high of \$3,057.49 per ounce, with demand for the safe-haven asset supported by concerns over the potential economic impact of President Trump's tariff policies.

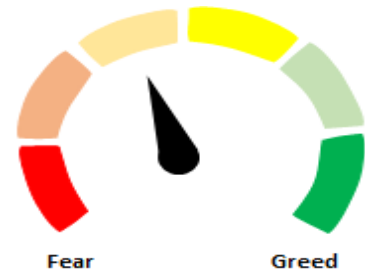
In Japan, core inflation reached 3.0% in February, while an index excluding fuel effects increased at its fastest rate in nearly a year. These broadening price pressures reinforce market expectations for additional interest rate hikes.

Indian equities climbed to their highest level in over a month on Thursday, propelled by the US Federal Reserve's signal of additional interest rate cuts later this year. The Nifty advanced for the fourth consecutive session, gaining 283 points (1.24%) to close at 23,190—its strongest finish since February 10. Mid-cap and small-cap segments maintained their upward trajectory, also marking their fourth straight day of gains.

In significant corporate developments, Manappuram Finance announced a strategic deal with Bain Capital Asia, wherein the private equity firm will invest Rs.385 crore to acquire shares and warrants representing an 18% stake in the NBFC. Meanwhile, Aditya Birla Group unveiled an ambitious ₹45,000-crore investment plan for Hindalco, targeting expansion in both copper and aluminium segments.

The Indian rupee extended its winning streak for the seventh consecutive day, touching a near two-month high of 86.2075—its strongest level since January 24. The currency ultimately closed with gains of 7 paise at 86.37, supported by positive equity market performance.

Nifty closed above its 50-day EMA for the first time since February 5, 2025. Following a robust 1,200-point rally from recent lows, short-term traders should reassess their bullish positions as the market enters a strong resistance zone between 23,200-23,400 levels. Support for the Nifty has now shifted higher to the 22,950-23,000 range.



Global Equity Indices				
	Close	Abs. Change		% Change
Indian Indices				
Sensex	76,348	899.0	▲	1.19%
Nifty	23,191	283.1	▲	1.24%
Midcap	51,144	327.3	▲	0.64%
Small cap	15,858	110.4	▲	0.70%
US Indices				
Dow Jones	41,953	-11.3	▼	-0.03%
S&P 500	5,663	-12.4	▼	-0.22%
Nasdaq	17,692	-59.2	▼	-0.33%
European Indices				
FTSE	8,702	-4.7	▼	-0.05%
DAX	22,999	-288.9	▼	-1.24%
CAC	8,094	-77.3	▼	-0.95%
Asian Indices				
Shanghai	3,386	-40.8	▼	-1.19%
Hang Seng	23,827	-943.7	▼	-3.81%
Nikkei	37,890	138.5	▲	0.37%

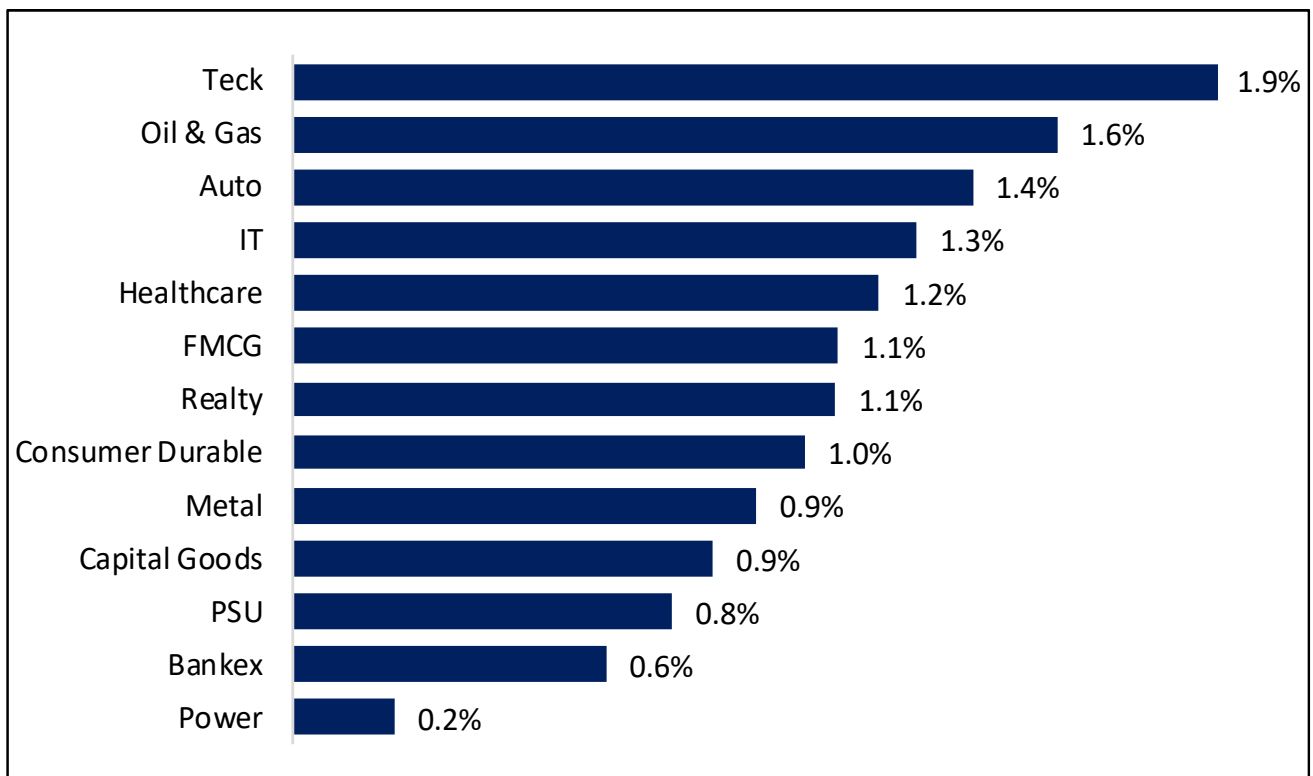
Indices Futures				
	Close	Abs. Change		% Change
IFSC Nifty				
IFSC Nifty	23,188	3.0	▲	0.01%
US Indices				
Dow Jones	42,303	17.0	▲	0.04%
S&P 500	5,716	3.5	▲	0.06%
Nasdaq	19,885	5.3	▲	0.03%
European Indices				
FTSE	8,702	4.0	▲	0.05%
DAX	22,960	-45.0	▼	-0.20%
Asian Indices				
Shanghai	3,910	-42.0	▼	-1.06%
Hang Seng	23,856	-337.0	▼	-1.39%

Nifty50 Index Contributors

Top Five (Positive Contributors)		
Stock	Points	% Change
HDFCBANK	41.8	0.18%
BHARTIARTL	40.8	0.18%
RELIANCE	33.3	0.15%
INFY	23.3	0.10%
TCS	15.1	0.07%

Bottom Five (Negative Contributors)		
Stock	Points	% Change
BAJFINANCE	-3.2	-0.01%
INDUSINDBK	-1.3	-0.01%
TRENT	-0.5	0.00%
SHRIRAMFIN	0.0	0.00%
COALINDIA	0.3	0.00%

BSE Sectoral Leaders & Laggards

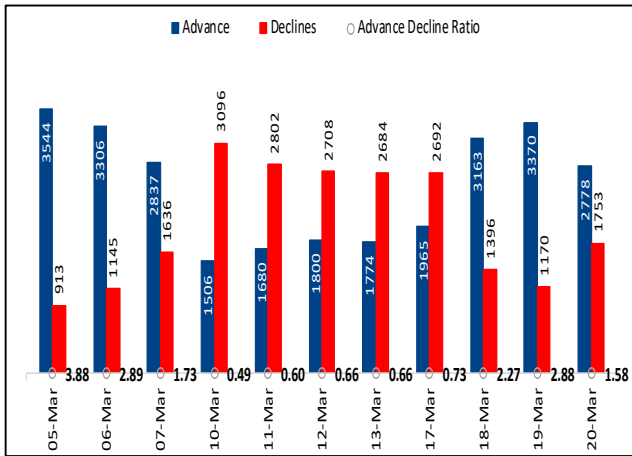


Nifty50 Index Top Pops & Drops

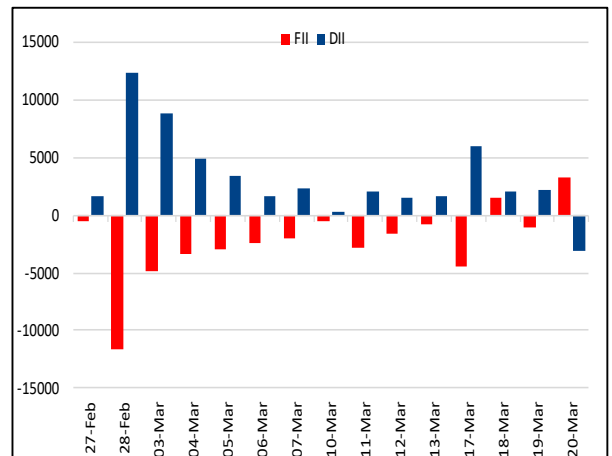
Nifty50 Top Five Gainers			
Symbol	LTP	% Change	Volume
BHARTIARTL	1,704.0	4.08%	12,074,465
TITAN	3,183.1	3.47%	1,542,807
EICHERMOT	5,234.0	2.61%	491,655
BAJAJ-AUTO	7,920.0	2.57%	606,109
BRITANNIA	4,828.0	2.57%	265,168

Nifty50 Top Five Losers			
Symbol	LTP	% Change	Volume
INDUSINDBK	685.0	-1.11%	8,918,567
BAJFINANCE	8,680.0	-0.59%	792,433
TRENT	5,215.0	-0.30%	759,448
SHRIRAMFIN	666.3	-0.25%	8,747,482

BSE Advance & Declines



Institutional Activities



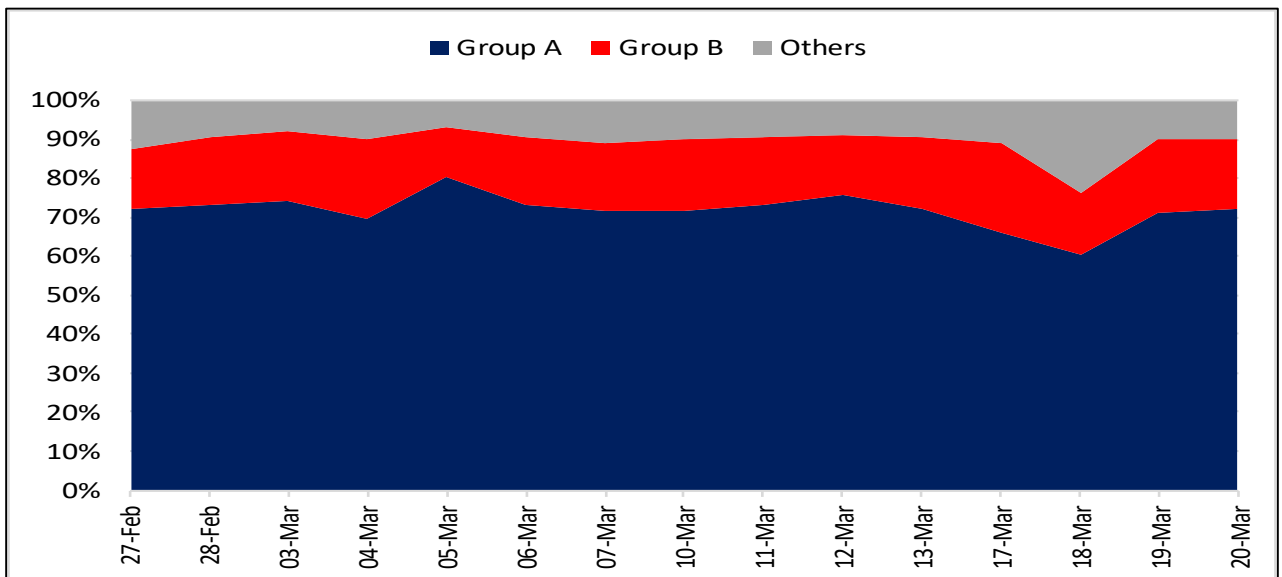
52 Week High Stocks

	20-Mar-25	19-Mar-25
BSE Universe	127	145
BSE Group A Stocks Hitting 52 Week High		
Stocks	Price	52 Week High
AAVAS	1978.9	1997.0
KSCL	1247.6	1254.9
ASTRAZEN	8391.5	8869.7
NH	1684.8	1719.9
SHREECEM	28638.5	28899.5




52 Week Low Stocks

	20-Mar-25	19-Mar-25
BSE Universe	118	167
BSE Group A Stocks Hitting 52 Week Low		
Stocks	Price	52 Week Low
KEI	2843.7	2765.0

BSE Cash Market Turnover Participant-wise



News Highly Sensitive to Stock Price

Impact	Stock	News
	Hindalco	Kumar Mangalam Birla announced Rs 45,000-crore investment plan for Hindalco for copper and aluminium segments. =In his keynote address at Hindalco Industries' launch of new brand identity, Birla said, "We are committing Rs 45,000 crore across the aluminium, copper and specialty alumina businesses to deliver both upstream and next-gen high precision engineered products to our customers."
	Ola Electric	Ola Electric is under increasing regulatory scrutiny, as the Ministry of Heavy Industries plans to send a second letter requesting detailed information about the company's sales and vehicle registration figures. Heavy Industries Minister HD Kumaraswamy is expected to dispatch the letter by next week.
	Manappuram Finance	US-based Bain Capital is set to take over a invest controlling stake in Manappuram Finance Ltd. as it will buy an 18% stake in Manappuram Finance Ltd. worth Rs 4,385 crore through a preferential allotment of shares.

Stock	News
HCC	Hindustan Construction Company (HCC) and Tata Projects (TPL) in a 50:50 Joint Venture have been awarded a Rs 2,470 crore contract by Tata Power Company for the construction of Bhivpuri Off-Stream Open Loop Pumped Storage Project (PSP) 1000 MW (2x333 MW + 2x167 MW) located at Karjat, Maharashtra.
Automotive Axles	Company has entered into a binding memorandum of understanding (MOU) with Meritor HVS (India) to restructure its commercial operations. the revised agreement will allow Automotive Axles to directly supply products to certain customers who were previously serviced through MHVSIL.
Marksans Pharma	For manufacture of pharmaceutical formulations for Australian markets Marksans Pharma announced that its manufacturing facility located at Plot A-1, Phase 1-A, Verna Industrial Estate, Verna, Goa has been approved by Australian TGA for manufacture of pharmaceutical formulations in Solid Dosage Forms of Tablets and hard Capsules for Australian markets.
Diamond Power Infra	Company announced that it has received a letter of intent from Associated Power Structures worth Rs 175.17 crore for supply of AL-59 conductor as per GETCO Technical Specification.
ISGEC Heavy Engineering	Company completed the additional equity infusion of Rs 2.55 crore in the capital of venture and subsidiary company namely Isgec Titan Metal Fabricators. Accordingly, the company has been allotted 1,02,000 equity shares of Isgec Titan Metal Fabricators.
Adani Enterprises	Adani Enterprises, through its subsidiary Kutch Copper, has formed a 50/50 joint venture with Praneetha Ventures to create Praneetha Ecocables. Praneetha Ecocables (PEL) will focus on manufacturing, marketing, distribution, buying and selling of metal products, cables and wires.
Container Corporation of India Ltd.	Container Corporation of India Ltd. Announces the award of a contract to M/s GATX India Pvt. Ltd. for the supply of 10 rakes of BLSS wagons on an operating lease for a period of 10 years, valued at Rs. 192 crores.
JSW Energy	The company's finance committee approved the allotment of 80,000 non-convertible debentures worth Rs 800 crore in two tranches on a private-placement basis.

Stock	News
Piramal Pharma	Piramal Pharma Ltd said Piramal Critical Care (PCC) and Ireland-based BrePco Biopharma Ltd (BPCO) have received UK Medicines and Healthcare Products Regulatory Agency (MHRA) approval for Naeoatricon, the first paediatric-strength dopamine hydrochloride infusion for treating hypotension in neonates, infants, and children.
CG Power	CG Power and Industrial Solutions Ltd announced the launch of a new range of air coolers featuring JetChill technology. This advanced cooling technology enhances airflow efficiency and ensures faster cooling, strengthening CG Power’s position in the consumer durables sector.
Hero MotoCorp	The company's board has approved a strategic investment of up to Rs 525 crore (in one or more tranches), in Euler Motors Private Limited. Hero MotoCorp said it has forayed into the electric three-wheeler segment by acquiring a 32.5 per cent stake in Euler Motors. Additionally, within the aforementioned amount, HMCL may acquire shares from existing shareholders of Euler by way of secondary sale, it added.
IndusInd Bank	The board has engaged an independent professional firm to thoroughly investigate discrepancies in its derivative portfolio
The New India Assurance Co	The company has received a Rs 125 crore penalty from the Income Tax Department.
Unichem Laboratories:	The company has completed the capacity expansion of its API plant in Pithampur.
GRSE	Garden Reach Shipbuilders & Engineers Ltd. (GRSE) achieved a significant milestone by signing a breakthrough Memorandum of Understanding (MoU) with PWD Nagaland for the supply of eight sets of Double Lane Modular Steel Bridges in the state. This landmark MoU marks the first ever MoU between GRSE and a North Eastern State, aligning with the Government of India's Make in India initiative for accelerated regional development.
Oil and Gas	The government will not be able to impose windfall tax on oil and gas producers after a new law comes into place following the passage of the oilfield development bill by Parliament.

Stock	News
GPT Infra	Company announced that it had been declared the L1 (lowest) bidder for an order worth Rs 481.11 crore from CAO Construction, South Eastern Railway, Kolkata, for construction work.
Tata Communications	<p>(1)Tata Communications is likely to invest over USD 200 million in FY26, a top official said on Thursday. The Tata group company has been investing about USD 200-300 million per year for the last few fiscals.</p> <p>(2) Tata Communications announced the launch of Tata Communications Vayu, its next-gen Cloud fabric revolutionising enterprise IT. With a unified, purpose-driven architecture, it tackles rising Cloud costs, multi-Cloud complexities, and AI infrastructure demands - empowering businesses to navigate the Intelligent Enterprise era seamlessly.</p>
TCS	Tata Consultancy Services (TCS) has partnered with The Cumberland Building Society in the UK to modernize its core banking ecosystem. Through this collaboration, TCS will deploy its state-of-the-art digital banking solution, TCS BaNCS™ for Core Banking, along with TCS Digital Home Lending Solution, and Quartz for Compliance, to drive innovation and operational efficiency.
NCC	Company announced that it had received a letter of acceptance (LoA) worth Rs 2,129.60 crore from the Andhra Pradesh Capital Region Development Authority for construction works in Amaravati Capital City.
TBO Tek	A Rs 400 crore block deal in travel distribution firm TBO Tek Ltd has been launched, with Augusta TBO Singapore Pte Ltd and TBO Korea Holdings Ltd offering to sell up to 3.1% stake in the company
HUL	Hindustan Unilever Ltd's board of directors has approved an investment to acquire a 14.3% stake in Lucro Plastecycle Private Limited, a key player in recycled flexible plastics.
Bajaj Finance	Bajaj Finance Ltd announced key leadership changes, with Rajeev Jain appointed as vice chairman in the capacity of an executive director for a three-year term starting April 1, 2025.
Hindustan Zinc Limited	Hindustan Zinc Limited announces the allotment of NCDs totaling Rs.500 crores.

Stock	News
Adani Green Energy Limited	Adani Green Energy Limited announces the commissioning of a 250 MW solar power project at Bhimsar, Rajasthan, effective March 21, 2025.
Glenmark Pharma	Glenmark Pharmaceuticals Ltd said its arms Pharmaceuticals Inc., USA, has received final approval from the US Food & Drug Administration (USFDA) for its Olopatadine Hydrochloride Ophthalmic Solution USP, 0.2% (OTC).
Zomato	Zomato Ltd said the Ministry of Corporate Affairs (MCA) has approved the name change of the company to Eternal Limited, effective March 20, 2025.
Lloyds Metals	Lloyds Metals and Energy Ltd has received the environmental clearance from the Ministry of Environment, Forest, and Climate Change for its upcoming 1.2 million tonne per annum (MTPA) wire rod project and 4 MTPA pellet plant project at Ghugus, Chandrapur, Maharashtra.

Key Events

Japan's core inflation hits 3% in February, keeps alive BOJ rate-hike bets

Japan's core inflation hit 3.0% in February and an index stripping away the effect of fuel rose at the fastest pace in nearly a year, a sign of broadening price pressure that reinforces market expectations of further interest rate hikes.

The data came in the wake of Bank of Japan (BOJ) Governor Kazuo Ueda's warning, made after its decision to keep interest rates steady on Wednesday, that rising food costs and stronger-than-expected wage growth could push up underlying inflation.

The increase in the core consumer price index (CPI), which strips away the effect of volatile fresh food costs, compared with a median market forecast of a 2.9% gain. That kept core inflation above the BOJ's 2% target for the 35th straight month.

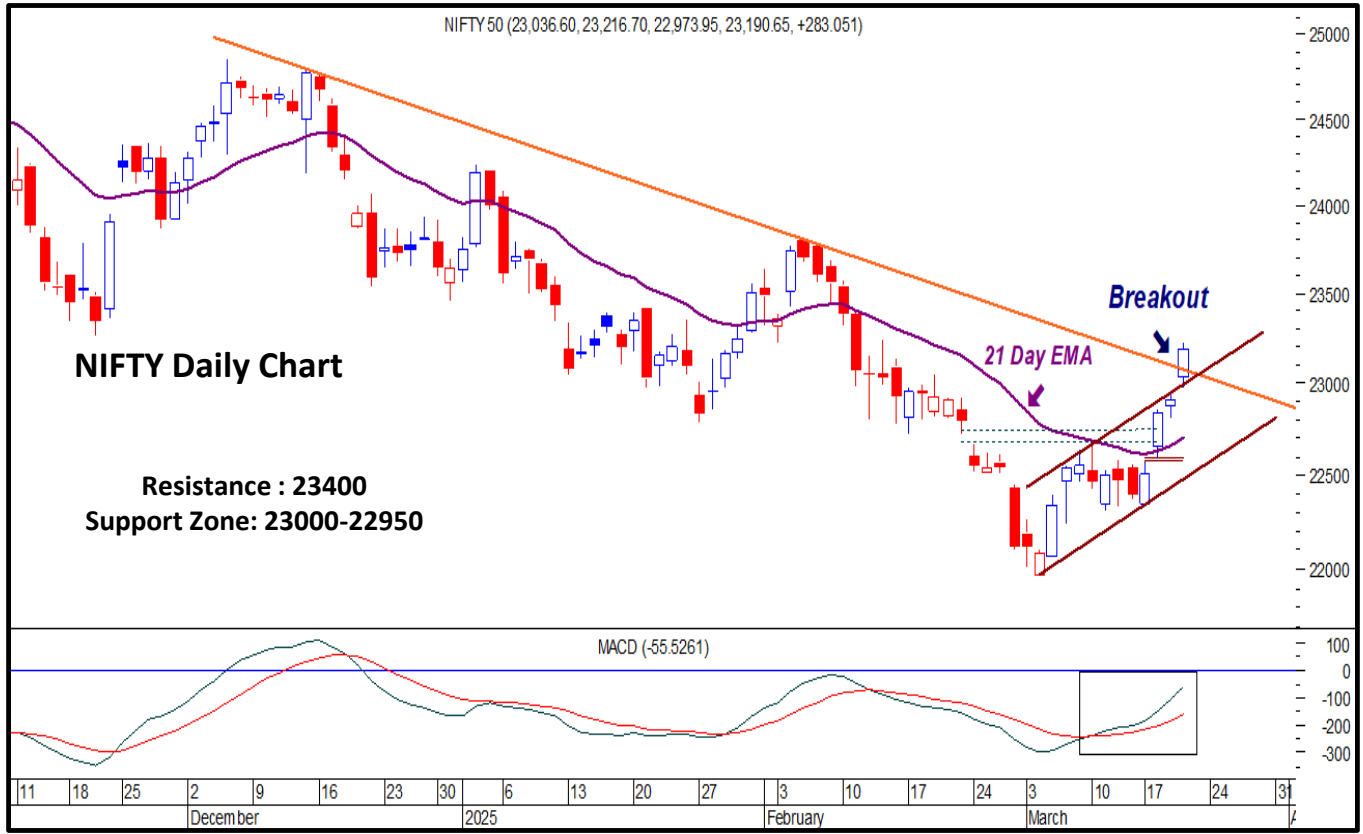
US labor market holding steady, but job opportunities dwindling

The number of Americans filing new applications for unemployment benefits increased slightly last week, suggesting the labor market remained stable in March, though the outlook is darkening amid rising trade tensions and deep cuts in government spending. Initial claims for state unemployment benefits rose 2,000 to a seasonally adjusted 223,000 for the week ended March 15. Economists polled by Reuters had forecast 224,000 claims for the latest week. Claims have been bouncing in the middle of the 203,000-242,000 range this year, with layoffs generally staying low and hiring cooling off.

US current account deficit narrows in fourth quarter

The U.S. current account deficit contracted in the fourth quarter, but the improvement could be temporary as goods imports surged to a record high in January, driven by businesses preemptively buying foreign merchandise to avoid tariffs. The Commerce Department's Bureau of Economic Analysis said on Thursday the current account deficit, which measures the flow of goods, services and investments into and out of the country, narrowed \$6.3 billion, or 2.0% to \$303.9 billion. Data for the third quarter was revised to show the deficit widening to a record high of \$310.3 billion instead of \$310.9 billion as previously reported.

Nifty :Trendline and channel breakout; Bullish momentum to continue



NIFTY FMCG Index : Breakout above cluster resistance of Horizontal line & 21 Day EMA.



CHART WITH INTERESTING OBSERVATION

Three Months That Changed the Investment World

- Since December 2024 German stocks have beaten the Magnificent Seven by more than 50% amid value buying and upbeat German economic data.
- The Trump trade policy weighed on the US market while dovish euro are central and defense spending supported the German DAX to outperform the US Magnificent 7 since start of the year.

Bloomberg Magnificent 7 Relative to German DAX Index (US \$)



BM7T Index (Bloomberg Magnificent 7 Total Return Index) Daily 01JAN2024-21MAR2025

Copyright© 2025 Bloomberg Finance L.P.

21-Mar-2025 08:43:44

Source: Bloomberg, HSL Prime Research

F&O Highlights

SHORT COVERING WAS SEEN IN NIFTY & BANKNIFTY FUTURES

Create Longs with the SL Of 23100 Levels.

- Nifty rose for the fourth consecutive session, with a gain of 283 points or 1.24%, to close at 23190. This is the highest Nifty close since 10 Feb..
- Short Covering was seen in the Nifty Futures where Open Interest fell by 3.17% with Nifty rising by 1.24%.
- Short Covering was seen in the Bank Nifty Futures where Open Interest fell by 3.02% with Bank Nifty rising by 0.72%.
- Nifty Open Interest Put Call ratio fell to 1.15 levels from 1.20 levels.
- Amongst the Nifty options (27-Mar Expiry), Call writing is seen at 23400-23500 levels, indicating Nifty is likely to find strong resistance in the vicinity of 23400-23500 levels. On the lower side, an immediate support is placed in the vicinity of 23100-23000 levels where we have seen Put writing.
- Short covering was seen by FII's' in the Index Futures segment where they net bought worth 2,933 cr with their Open Interest going down by 3636 contracts.

Index	Expected Trend	Prev. Close	Buy/Sell	Stop Loss	Target
NIFTY FUT	UP	23200.25	BUY	23100	23350
BANK NIFTY FUT	UP	50097.10	BUY	49700	50500

Nifty50 Snapshot			
	20-Mar-25	19-Mar-25	% Chg.
Nifty Spot	23190.65	22907.60	1.24
Nifty Futures	23200.25	22972.95	0.99
Premium/ (Discount)	9.60	65.35	N.A.
Open Interest (OI)	1.93	1.99	-3.17
Nifty PCR	1.15	1.20	-4.81

Bank Nifty Snapshot			
	20-Mar-25	19-Mar-25	% Chg.
Bank Nifty Spot	50062.85	49702.60	0.72
Bank Nifty Futures	50097.10	49808.15	0.58
Premium/ (Discount)	34.25	105.55	N.A.
Open Interest (OI)	0.45	0.47	-3.02
Bank Nifty PCR	1.17	1.23	-4.77

Nifty Options Highest OI (Weekly)			
CALL		PUT	
Strike Price	Open Interest (Contracts)	Strike Price	Open Interest (Contracts)
24000	140138	22000	149709

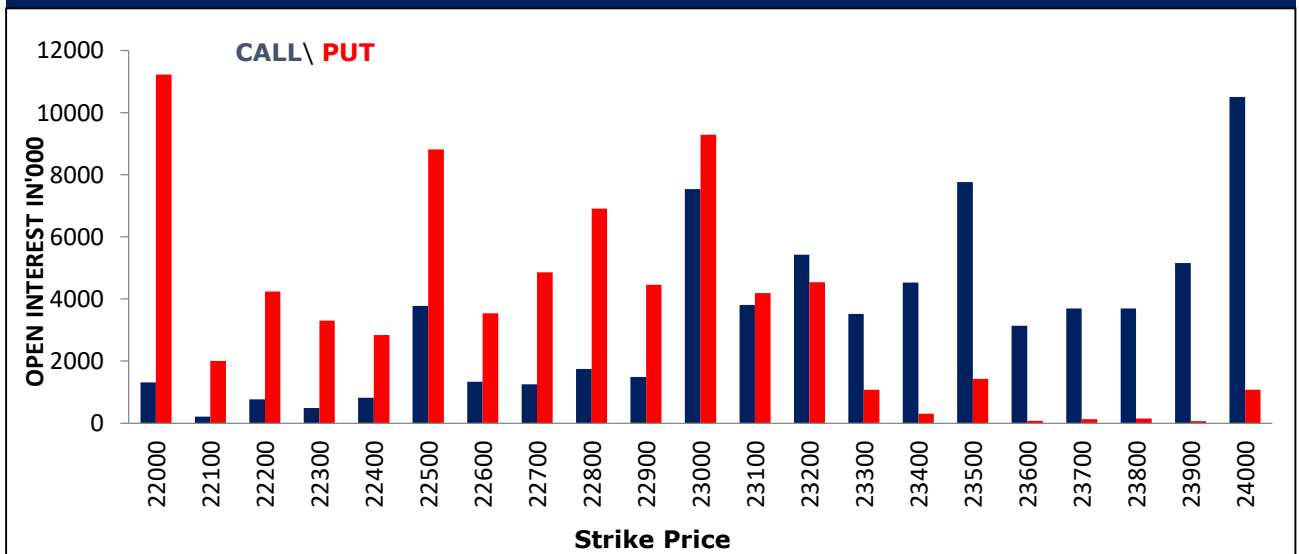
FII Activity On 20 Mar 2025

	BUY		SELL		NET	OPEN INTEREST	
	Contracts	Value (Rs Cr)	Contracts	Value (Rs Cr)	(Rs Cr)	Contracts	Value (Rs Cr)
Index Futures	39991	6625	22671	3692	2933	273310	44450
Nifty Futures	28030	4873	13160	2284	2590	161244	28086
Bank Nifty Fut.	8262	1243	7592	1140	102	73638	11081
Index Options	12202362	2084869	12576554	2151380	-66511	2474138	410149
Nifty Options	11347601	1958629	11730023	2026130	-67501	1673611	291091
Bank Nifty Opt.	660987	98637	651771	97527	1111	669799	100596
Stock Futures	423713	25942	377632	22689	3253	5705059	342739
Stock Options	1552947	97446	1585335	99502	-2057	1473866	86613

FII's Open Interest (Contracts)

Date	Index Futures	Nifty Futures	Bank nifty Futures	Index Options	Nifty Options	Bank Nifty Options	Stock Futures	Stock Options
20-Mar-25	273310	161244	73638	2474138	1673611	669799	5705059	1473866
19-Mar-25	276946	158304	77762	3155418	2370865	662195	5688574	1400430
Net Contracts	-3636	2940	-4124	-681280	-697254	7604	16485	73436

Nifty Monthly (27 - Mar) Option Open Interest Distribution



Top Gainers OI Wise		
Company	Future OI (%)	Price (%)
KEI	121	-13
POLYCAB	31	-7
MANAPPURAM	26	2
TITAGARH	21	-1
SONACOMS	21	0

Top Losers OI Wise		
Company	Future OI (%)	Price (%)
MAXHEALTH	-12	4
JKCEMENT	-11	0
HDFCLIFE	-7	1
BEL	-7	2
VBL	-6	1

Top Gainers Price Wise		
Company	Future OI (%)	Price (%)
BHARATFORG	3	5
MAXHEALTH	-12	4
PHOENIXLTD	6	4
BHARTIARTL	-3	4
HINDCOPPER	-4	4

Top Losers Price Wise		
Company	Future OI (%)	Price (%)
KEI	121	-13
POLYCAB	31	-7
PAYTM	-2	-4
HAVELLS	4	-4
CAMS	5	-3

Long Buildup		
Company	Future OI (%)	Price (%)
MANAPPURAM	26	2
SONACOMS	21	0
TORNTPOWER	12	2
TIINDIA	11	1
ESCORTS	6	0

Short Buildup		
Company	Future OI (%)	Price (%)
KEI	121	-13
POLYCAB	31	-7
TITAGARH	21	-1
CHAMBLFERT	9	-1
TATATECH	9	-1

Long Unwinding		
Company	Future OI (%)	Price (%)
DLF	-4	0
BANKINDIA	-4	-1
INDUSINDBK	-3	-1
CUMMINSIND	-2	0
PAYTM	-2	-4

Short Covering		
Company	Future OI (%)	Price (%)
MAXHEALTH	-12	4
JKCEMENT	-11	0
HDFCLIFE	-7	1
BEL	-7	2
VBL	-6	1

Securities In Ban For Trade – 21.03.2025

No.	Company Name
1.	HINDCOPPER
2.	INDUSINDBK
3.	MANAPPURAM
4.	POLYCAB
5.	SAIL

Economic Calendar

Friday	Monday	Tuesday	Wednesday	Thursday
21 March	24 March	25 March	26 March	27 March
Japan: Natl CPI UK: Gfk Cons. Confidence EU: ECB CA, Cons. Confidence India: FX Reserves, BoP Account	Japan, India, EU, UK, US: Flash Mfg. & Service PMI	US: New Home Sales, CBI Consumer Confidence, Richmond Fed. Mfg. Index, Building Permits	UK: CPI, HPI US: MBA Mortgage, Durable Goods Orders	China: Industrial Profit USD: GDP, Personal Consumption, Core PCE, Wholesale Inventory, Initial & Continuing Jobless Claims, Pending Home Sales

Open Derivatives Trading Calls

NO.	RECO DT.	RECO	COMPANY NAME	ENTRY	CMP	SL	TARGET	UPSIDE %	VALID TILL
1	20-MAR-25	BUY	BANK NIFTY 27TH MARCH 50000 CALL OPTION	383.55	375.1	275.0	530	41.3	25-MAR-25
2	19-MAR-25	BUY	OBEROI REALITY MAR FUT	1621-1580	1,648.6	1,565.0	1726	4.7	2-APR-25

Open Short-Term MTF Calls

NO.	RECO DT.	RECO	COMPANY NAME	ENTRY	CMP	SL	TARGET	UPSIDE %	VALID TILL
1	17-MAR-25	BUY	CIPLA	1492-1466	1,512.1	1,445.0	1562	3.3	7-APR-25
2	17-MAR-25	BUY	JCHAC	1850.7-1790	1,823.0	1,758.0	1985	8.9	31-MAR-25
3	19-MAR-25	BUY	BEML	2716.70-2625	2,743.9	2,580.0	2910	6.1	2-APR-25
4	19-MAR-25	BUY	NFL	83.20-80.25	83.6	79.0	89.25	6.8	2-APR-25
5	20-MAR-25	BUY	GSPL	284.85-277	285.7	271.0	302	5.7	3-APR-25
6	20-MAR-25	BUY	HERITAGE FOODS	400.90-392	403.9	384.0	426	5.5	3-APR-25

Open Positional MTF Calls

NO.	RECO DT.	RECO	COMPANY NAME	ENTRY	CMP	SL	TARGET 1	TARGET 2	UPSIDE %	VALID TILL
1	13-MAR-25	BUY	BHARAT DYNAMIC*	1133.75-1080	1,247.0	1133.8	1235.0	1305.0	5	15-MAR-25
2	18-MAR-25	BUY	HIKAL	390.7-369	402.7	362.0	424.0	442.0	10	20-MAR-25
3	18-MAR-25	BUY	PSU BANKBEEES	65.16-63.50	67.0	62.5	68.0	71.0	6	20-MAR-25
4	18-MAR-25	BUY	ITC HOTELS	176.90-170	183.2	164.0	190.0	205.0	12	20-MAR-25

Open Muhurat Trading MTF Picks

NO.	RECO DT.	RECO	COMPANY NAME	ENTRY	CMP	SL	TARGET 1	TARGET 2	UPSIDE %	VALID TILL
1	28-OCT-24	BUY	KARUR VYSYA BANK	214-218	203.7	183.0	249.0	269.0	32	NEXT DIWALI

*= 1st Target Achieved

NSE 200 SUPPORT & RESISTANCE

SYMBOL	CLOSE	R2	R1	PIVOT	S1	S2	5 DMA	20 DMA	% Delivery	Trend
ABB	5460.7	5600.6	5530.7	5435.7	5365.7	5270.7	5330.7	5245.2	39.5	Bullish
ABCAPITAL	176.8	181.3	179.1	175.1	172.8	168.9	167.6	159.7	40.8	Bullish
ABFRL	250.7	256.1	253.4	249.4	246.7	242.8	245.3	244.9	48.3	Bullish
ACC	1889.6	1922.1	1905.9	1895.2	1879.0	1868.3	1881.3	1862.2	57.6	Bullish
AMBUJACEM	504.7	515.9	510.3	506.9	501.3	497.8	497.3	485.8	49.9	Bullish
ADANIPOWER	519.7	533.6	526.6	520.5	513.5	507.4	516.0	498.9	32.3	Bullish
ADANIGREEN	923.4	943.7	933.6	917.8	907.7	891.9	901.1	847.8	32.6	Bullish
ADANITRANS	815.1	835.1	825.1	813.0	803.0	790.9	801.2	723.5	26.7	Bullish
ADANIENT	2339.3	2377.8	2358.5	2328.8	2309.5	2279.8	2288.1	2205.7	65.2	Bullish
ADANIPORTS	1177.5	1201.0	1189.2	1175.2	1163.5	1149.5	1153.2	1112.7	48.6	Bullish
ASHOKLEY	207.5	211.4	209.4	207.6	205.6	203.7	202.4	211.2	42.4	Bearish
ALKEM	4906.2	5000.0	4953.1	4897.6	4850.7	4795.2	4818.7	4707.2	58.4	Bullish
APOLLOHOSP	6474.4	6561.8	6518.1	6440.9	6397.2	6320.0	6282.2	6238.7	67.6	Bullish
ASIANPAINT	2287.2	2325.9	2306.6	2287.7	2268.3	2249.4	2258.5	2236.0	52.5	Bullish
APOLLTYRE	427.0	433.4	430.2	425.4	422.2	417.4	413.1	402.8	49.0	Bullish
AUROPHARMA	1174.2	1192.8	1183.5	1170.6	1161.3	1148.4	1136.3	1104.3	32.7	Bullish
ASTRAL	1274.3	1302.1	1288.2	1270.1	1256.2	1238.2	1253.2	1320.8	54.8	Bearish
ATGL	619.7	644.1	631.9	623.6	611.4	603.1	611.8	589.9	32.4	Bullish
AUBANK	525.3	547.5	536.4	523.2	512.1	499.0	509.9	532.3	24.3	Bearish
AWL	254.9	264.0	259.5	256.5	251.9	248.9	250.1	252.9	55.0	Bearish
AXISBANK	1054.4	1065.4	1059.9	1053.4	1047.9	1041.4	1039.2	1022.6	65.9	Bullish
BAJFINANCE	8679.7	8889.9	8784.8	8663.0	8557.9	8436.1	8618.9	8495.2	41.7	Bullish
BANDHANBNK	141.5	144.7	143.1	142.1	140.5	139.5	140.3	141.4	42.5	Bearish
BATAINDIA	1269.3	1307.5	1288.4	1274.9	1255.8	1242.2	1243.3	1251.5	44.6	Bearish
BHARTIARTL	1705.3	1750.6	1727.9	1687.0	1664.4	1623.5	1648.3	1630.8	71.3	Bullish
BEL	297.1	302.0	299.5	295.3	292.8	288.6	286.5	269.4	57.7	Bullish
BHEL	206.5	211.1	208.8	205.7	203.4	200.2	201.0	194.9	30.2	Bullish
BHARATFORG	1194.3	1236.1	1215.2	1181.1	1160.2	1126.1	1109.2	1070.6	41.2	Bullish
BALKRISIND	2600.3	2676.5	2638.4	2610.9	2572.8	2545.3	2558.9	2596.0	54.4	Bearish
BIOCON	341.1	347.6	344.4	341.4	338.1	335.1	335.1	326.0	38.8	Bullish
BAJAJ-AUTO	7920.0	8094.6	8007.3	7864.7	7777.4	7634.7	7649.2	7838.3	55.5	Bearish
BAJAJFINSV	1851.9	1881.2	1866.5	1840.3	1825.6	1799.4	1843.6	1848.6	56.0	Bearish
BAJAJHLDNG	11998.7	12197.4	12098.1	11950.5	11851.2	11703.6	11675.0	11689.5	36.3	Bearish
BANKBARODA	215.7	219.1	217.4	216.0	214.3	212.9	210.0	205.8	51.9	Bullish
BANKINDIA	102.4	105.5	104.0	102.9	101.3	100.2	98.6	97.9	48.0	Bullish
ABBOTINDIA	30179.4	31012.9	30596.1	30323.1	29906.3	29633.2	30006.6	30267.0	25.7	Bearish
BOSCHLTD	27623.9	28039.3	27831.6	27667.3	27459.6	27295.4	27049.8	26977.1	30.7	Bullish
BPCL	272.1	278.1	275.1	269.9	266.9	261.8	265.1	256.7	47.7	Bullish
BERGEPAIN	507.9	517.2	512.5	505.7	501.1	494.3	501.1	496.2	25.7	Bullish
BRITANNIA	4831.1	4920.4	4875.7	4795.4	4750.7	4670.4	4741.9	4741.4	55.4	Bullish
CANBK	85.8	87.3	86.6	86.0	85.2	84.6	84.1	84.2	47.3	Bearish
CONCOR	675.9	696.0	685.9	679.4	669.3	662.8	661.4	659.7	46.0	Bullish
CGPOWER	654.6	679.5	667.1	657.4	644.9	635.2	632.5	608.0	43.4	Bullish
CHOLAFIN	1493.2	1564.3	1528.7	1502.5	1466.9	1440.7	1484.4	1435.7	70.9	Bullish
CIPLA	1512.1	1530.5	1521.3	1508.4	1499.1	1486.2	1494.9	1459.7	49.7	Bullish
COLPAL	2418.3	2456.4	2437.4	2425.0	2405.9	2393.5	2411.7	2445.4	58.1	Bearish
COALINDIA	396.4	401.6	399.0	395.5	392.9	389.5	389.1	374.8	62.7	Bullish
COFORGE	7578.3	7864.8	7721.5	7636.8	7493.5	7408.8	7470.4	7540.6	25.0	Bearish
COROMANDEL	1983.2	2032.4	2007.8	1988.4	1963.8	1944.5	1922.2	1758.9	67.9	Bullish
CROMPTON	357.5	364.9	361.2	358.8	355.1	352.6	354.4	340.7	52.0	Bullish

NSE 200 SUPPORT & RESISTANCE

SYMBOL	CLOSE	R2	R1	PIVOT	S1	S2	5 DMA	20 DMA	% Delivery	Trend
DABUR	499.0	504.0	501.5	497.3	494.8	490.5	497.8	498.5	78.7	Bearish
DALBHARAT	1696.3	1739.2	1717.7	1705.0	1683.5	1670.8	1681.5	1706.0	53.0	Bearish
DELHIVERY	257.1	266.5	261.8	258.4	253.7	250.3	250.8	256.6	61.4	Bearish
DEVYANI	151.0	157.1	154.1	152.4	149.3	147.7	151.8	164.7	54.3	Bearish
DIVISLAB	5822.1	5891.8	5856.9	5831.0	5796.1	5770.2	5740.9	5667.5	68.9	Bullish
DIXON	13905.7	14245.7	14075.7	13915.0	13745.0	13584.3	13534.7	13816.2	36.0	Bearish
DLF	694.3	714.1	704.2	696.6	686.7	679.2	676.1	666.7	58.9	Bullish
LALPATHLAB	2518.3	2620.1	2569.2	2540.1	2489.2	2460.2	2535.7	2500.8	54.1	Bullish
DMART	3884.4	3947.0	3915.7	3873.4	3842.1	3799.8	3837.2	3624.2	39.5	Bullish
DEEPAKNTR	2031.3	2092.0	2061.6	2043.3	2013.0	1994.7	1995.0	1942.4	47.4	Bullish
DRREDDY	1187.2	1206.5	1196.9	1181.1	1171.4	1155.6	1156.3	1139.3	60.5	Bullish
EICHERMOT	5229.4	5346.2	5287.8	5200.5	5142.1	5054.9	5104.6	4989.6	45.3	Bullish
ESCORTS	3201.1	3254.2	3227.6	3184.9	3158.3	3115.6	3055.7	2996.8	24.1	Bullish
FEDERALBNK	186.5	188.7	187.6	186.6	185.6	184.6	181.4	180.2	63.2	Bullish
FLUOROCHEM	4004.2	4159.0	4081.6	3933.9	3856.5	3708.8	3873.0	3740.9	58.5	Bullish
FORTIS	627.4	641.8	634.6	623.7	616.5	605.6	611.2	619.7	52.6	Bearish
GAIL	168.5	172.2	170.3	167.5	165.6	162.8	162.4	160.2	44.7	Bullish
GODREJCP	1101.5	1123.5	1112.5	1093.7	1082.7	1064.0	1067.5	1041.5	67.0	Bullish
GLAND	1591.7	1620.9	1606.3	1585.4	1570.7	1549.8	1573.0	1572.9	78.2	Bullish
GODREJPROP	2108.9	2165.5	2137.2	2112.2	2083.9	2058.9	2036.8	2019.7	58.2	Bullish
GRASIM	2468.2	2493.6	2480.9	2464.5	2451.8	2435.4	2423.5	2402.3	55.3	Bullish
GUJGASLTD	402.5	414.5	408.5	399.9	393.9	385.4	388.8	387.9	31.6	Bullish
HAVELLS	1501.4	1546.4	1523.9	1497.5	1474.9	1448.5	1499.6	1480.8	49.6	Bullish
HCLTECH	1562.0	1598.8	1580.4	1563.7	1545.3	1528.7	1548.9	1590.6	67.2	Bearish
HDFCAMC	3967.8	4083.5	4025.7	3985.4	3927.6	3887.3	3848.6	3790.9	61.3	Bullish
HDFCBANK	1768.8	1788.7	1778.7	1764.0	1754.0	1739.3	1732.4	1706.4	66.1	Bullish
HDFCLIFE	674.4	689.9	682.1	670.6	662.9	651.4	646.3	627.9	68.1	Bullish
HEROMOTOCO	3597.2	3670.2	3633.7	3597.5	3560.9	3524.7	3544.2	3669.8	42.8	Bearish
HAL	3819.0	3934.2	3876.6	3790.4	3732.7	3646.5	3595.1	3408.5	41.8	Bullish
HINDALCO	706.0	716.7	711.3	704.5	699.1	692.2	692.1	664.5	60.2	Bullish
HINDPETRO	336.6	346.8	341.7	334.4	329.2	321.9	327.6	322.0	37.3	Bullish
HINDUNILVR	2242.4	2287.0	2264.7	2226.6	2204.3	2166.1	2198.0	2212.6	63.8	Bearish
HONAUT	33867.4	36315.8	35091.6	34250.8	33026.6	32185.8	33950.6	34068.1	47.2	Bearish
HINDZINC	456.4	473.7	465.0	455.3	446.6	436.9	442.5	421.6	39.6	Bullish
ICICIBANK	1321.7	1332.2	1327.0	1319.0	1313.8	1305.8	1292.7	1242.3	79.3	Bullish
ICICIGI	1724.8	1783.4	1754.1	1736.8	1707.5	1690.2	1727.5	1702.6	57.9	Bullish
IDEA	7.3	7.8	7.5	7.3	7.1	6.9	7.1	7.6	30.6	Bearish
IDFCFIRSTB	55.7	56.5	56.1	55.8	55.4	55.2	54.4	57.2	45.9	Bearish
IGL	197.6	204.7	201.2	198.1	194.5	191.4	190.8	190.7	22.6	Bullish
INDHOTEL	816.1	832.9	824.5	813.6	805.2	794.2	783.3	750.5	50.3	Bullish
INDUSINDBK	684.1	708.7	696.4	688.7	676.4	668.7	681.6	886.4	64.2	Bearish
INDIANB	534.3	544.2	539.2	531.8	526.9	519.5	512.5	515.5	55.6	Bearish
INDIGO	5086.8	5279.1	5182.9	5094.2	4998.0	4909.3	4871.0	4642.0	49.0	Bullish
INDUSTOWER	340.6	346.9	343.8	338.9	335.8	330.9	334.9	333.1	45.7	Bullish
INFY	1615.6	1653.1	1634.3	1613.2	1594.4	1573.3	1596.3	1694.0	59.9	Bearish
NAUKRI	6850.3	7001.8	6926.0	6814.4	6738.7	6627.1	6629.6	6942.5	53.6	Bearish
IOC	129.2	132.8	131.0	129.2	127.4	125.6	126.4	122.1	45.2	Bullish
IPCALAB	1402.2	1449.1	1425.7	1391.4	1368.0	1333.7	1345.1	1370.5	47.1	Bearish
ICICIPRULI	578.2	591.9	585.0	575.0	568.2	558.2	555.9	556.8	46.4	Bearish
IRCTC	714.9	731.4	723.1	717.6	709.4	703.9	703.6	701.8	42.9	Bullish

NSE 200 SUPPORT & RESISTANCE

SYMBOL	CLOSE	R2	R1	PIVOT	S1	S2	5 DMA	20 DMA	% Delivery	Trend
IRFC	128.5	133.3	130.9	129.5	127.1	125.6	123.0	120.7	22.5	Bullish
ITC	404.0	408.9	406.4	404.2	401.7	399.4	407.2	404.0	67.3	Bearish
JINDALSTEL	926.2	941.1	933.6	924.4	916.9	907.7	912.3	888.4	43.0	Bullish
JSWSTEEL	1050.3	1069.0	1059.6	1043.4	1034.0	1017.8	1021.7	995.9	64.6	Bullish
JSWENERGY	562.9	587.6	575.2	563.7	551.3	539.8	544.8	500.2	32.5	Bullish
JUBLFOOD	627.6	645.8	636.7	628.4	619.3	610.9	621.6	638.5	47.0	Bearish
CUMMINSIND	2990.6	3070.1	3030.4	2989.2	2949.4	2908.2	2924.0	2856.8	49.7	Bullish
KOTAKBANK	2035.7	2052.8	2044.2	2030.4	2021.8	2008.0	2013.9	1960.7	71.9	Bullish
LAURUSLABS	604.5	615.4	609.9	603.7	598.2	592.0	590.6	561.2	41.7	Bullish
LICHSGFIN	555.8	566.7	561.2	556.1	550.7	545.6	536.3	527.7	49.0	Bullish
LICI	779.5	789.9	784.7	777.4	772.2	764.8	759.8	757.0	42.4	Bullish
LUPIN	2085.7	2130.2	2107.9	2077.8	2055.5	2025.4	2028.3	1975.9	54.6	Bullish
LT	3351.1	3411.0	3381.0	3329.0	3299.0	3247.0	3260.4	3237.4	69.1	Bullish
LTF	149.7	152.6	151.2	149.0	147.6	145.4	143.5	139.4	42.5	Bullish
LTIM	4421.2	4569.9	4495.5	4440.6	4366.2	4311.3	4411.8	4771.4	57.1	Bearish
LTTS	4654.7	4812.1	4733.4	4673.2	4594.5	4534.3	4548.0	4684.6	38.7	Bearish
MANKIND	2244.9	2329.2	2287.0	2226.8	2184.6	2124.4	2184.9	2265.9	53.5	Bearish
MFSL	1121.5	1157.0	1139.3	1119.1	1101.4	1081.2	1078.4	1043.4	56.3	Bullish
MAXHEALTH	1135.9	1175.7	1155.8	1118.9	1099.0	1062.1	1045.8	1009.9	58.2	Bullish
M&M	2828.1	2871.4	2849.7	2825.4	2803.7	2779.4	2751.5	2712.3	56.5	Bullish
M&MFIN	287.7	295.0	291.3	288.3	284.7	281.7	280.7	275.3	29.9	Bullish
MOTHERSON	128.8	131.4	130.1	128.7	127.4	126.0	125.2	125.1	41.0	Bullish
MPHASIS	2305.9	2398.4	2352.1	2323.3	2277.0	2248.2	2258.1	2345.2	36.9	Bearish
MARICO	632.4	645.6	639.0	627.2	620.6	608.9	617.3	612.7	48.0	Bullish
MRF	111107.9	112195.2	111651.6	110906.3	110362.7	109617.4	107864.5	107216.0	33.8	Bullish
MARUTI	11730.2	11871.4	11800.8	11694.4	11623.8	11517.4	11625.6	11897.0	65.3	Bearish
MSUMI	53.0	54.8	53.9	53.2	52.3	51.6	51.8	50.2	58.9	Bullish
MUTHOOT FIN	2374.8	2460.1	2417.4	2392.7	2350.0	2325.3	2319.1	2221.0	64.6	Bullish
NESTLEIND	2221.6	2258.1	2239.8	2210.5	2192.2	2162.9	2194.8	2210.2	57.0	Bearish
NAVINFLUOR	4168.5	4276.8	4222.6	4133.3	4079.2	3989.9	4133.8	4017.0	58.5	Bullish
NHPC	80.0	82.6	81.3	80.5	79.2	78.4	79.1	76.9	38.0	Bullish
NMDC	68.8	71.4	70.1	69.0	67.7	66.6	66.6	65.6	47.6	Bullish
NTPC	341.8	346.7	344.2	342.3	339.8	337.9	336.8	326.4	69.3	Bullish
NYKAA	168.1	174.4	171.2	168.3	165.1	162.1	165.9	164.5	52.3	Bullish
OBEROIRLTY	1642.7	1678.9	1660.8	1630.3	1612.2	1581.7	1575.2	1558.6	44.6	Bullish
OFSS	7578.8	7955.8	7767.3	7649.5	7461.0	7343.1	7529.6	7845.9	56.6	Bearish
OIL	391.3	399.9	395.6	389.6	385.3	379.2	383.3	373.6	40.1	Bullish
ONGC	235.6	239.9	237.8	234.9	232.7	229.9	231.1	231.0	66.2	Bullish
PAGEIND	41936.5	42894.2	42415.3	41771.2	41292.3	40648.2	40849.9	40807.2	38.8	Bullish
PATANJALI	1750.5	1778.1	1764.3	1753.0	1739.2	1728.0	1736.7	1772.1	47.0	Bearish
PAYTM	734.4	782.0	758.2	738.2	714.4	694.4	722.1	720.7	15.6	Bullish
PRESTIGE	1208.3	1250.6	1229.4	1213.6	1192.4	1176.6	1154.1	1167.1	50.4	Bearish
PGHH	13476.6	13779.6	13628.1	13543.0	13391.5	13306.5	13476.9	13555.5	68.4	Bearish
PIIND	3422.6	3473.1	3447.8	3418.5	3393.3	3364.0	3383.3	3212.2	49.1	Bullish
PIDILITIND	2759.1	2800.9	2780.0	2753.0	2732.1	2705.1	2739.8	2732.2	57.6	Bullish
PEL	967.4	988.3	977.8	968.2	957.7	948.0	924.0	913.9	67.3	Bullish
PETRONET	297.6	301.4	299.5	297.3	295.4	293.3	289.3	290.1	58.7	Bearish
PNB	91.3	93.6	92.5	91.7	90.5	89.8	89.2	90.3	42.1	Bearish
POLICYBZR	1559.2	1609.1	1584.1	1561.1	1536.2	1513.2	1451.1	1462.2	55.8	Bearish
POLYCAB	5083.4	5408.1	5245.8	5079.7	4917.4	4751.3	5148.1	5189.1	23.3	Bearish

NSE 200 SUPPORT & RESISTANCE

SYMBOL	CLOSE	R2	R1	PIVOT	S1	S2	5 DMA	20 DMA	% Delivery	Trend
POONAWALLA	318.2	330.2	324.2	320.7	314.7	311.2	303.8	288.7	33.6	Bullish
PFC	402.4	416.7	409.5	403.8	396.7	391.0	397.2	390.7	43.3	Bullish
PERSISTENT	5194.1	5455.0	5324.5	5254.6	5124.1	5054.2	5215.4	5377.0	51.5	Bearish
POWERGRID	280.4	286.8	283.6	280.3	277.1	273.8	272.7	264.1	66.9	Bullish
RECLTD	429.1	442.4	435.7	430.1	423.4	417.8	419.9	400.4	44.0	Bullish
RELIANCE	1269.2	1287.0	1278.1	1264.1	1255.1	1241.1	1248.4	1223.4	65.7	Bullish
SAIL	114.0	116.8	115.4	113.5	112.1	110.2	109.6	108.7	37.5	Bullish
SBICARD	856.9	872.8	864.8	851.9	843.9	831.0	843.1	841.6	45.6	Bullish
SBILIFE	1498.4	1515.5	1506.9	1497.7	1489.1	1479.9	1452.1	1443.0	61.0	Bullish
SBIN	749.6	757.3	753.4	748.8	744.9	740.3	736.5	723.5	51.0	Bullish
SHRIRAMFIN	667.9	706.0	686.9	676.0	656.9	646.0	644.2	619.1	48.3	Bullish
SIEMENS	5194.1	5349.1	5271.6	5191.3	5113.8	5033.5	5078.1	4962.8	46.8	Bullish
SONACOMS	508.5	523.3	515.9	510.3	502.9	497.3	496.4	503.0	36.1	Bearish
SHREECEM	28628.9	29157.7	28893.3	28535.5	28271.0	27913.2	28042.2	28022.3	47.5	Bullish
SRF	2993.1	3056.5	3024.8	3006.3	2974.6	2956.2	2990.3	2878.0	65.4	Bullish
SUNPHARMA	1750.3	1777.7	1764.0	1743.4	1729.7	1709.2	1723.6	1650.1	66.9	Bullish
SUNTV	621.9	636.0	628.9	617.0	609.9	598.0	590.6	577.5	53.4	Bullish
SYNGENE	704.5	718.9	711.7	705.8	698.6	692.7	686.9	683.7	63.0	Bullish
TATASTEEL	159.0	162.0	160.5	158.6	157.1	155.1	155.0	145.9	56.2	Bullish
TATACONSUM	965.9	978.7	972.3	961.3	954.8	943.8	949.8	970.7	68.9	Bearish
TATACOMM	1605.2	1643.7	1624.5	1595.7	1576.5	1547.7	1535.8	1444.3	46.5	Bullish
TCS	3563.2	3618.3	3590.7	3551.4	3523.8	3484.4	3524.3	3591.4	65.0	Bearish
TECHM	1410.6	1431.5	1421.0	1410.5	1400.1	1389.6	1423.6	1515.7	64.5	Bearish
TATAELXSI	5377.4	5551.3	5464.3	5412.0	5325.0	5272.6	5284.8	5541.8	32.7	Bearish
TIINDIA	2891.3	3012.5	2951.9	2906.9	2846.3	2801.4	2876.6	2734.8	49.2	Bullish
TORNTPOWER	1468.6	1501.8	1485.2	1456.6	1440.0	1411.5	1377.4	1320.5	44.6	Bullish
TATAPOWER	370.4	378.2	374.3	370.9	367.0	363.7	361.2	353.2	38.1	Bullish
RAMCOCEM	849.0	868.7	858.8	852.6	842.8	836.6	835.5	848.0	43.9	Bearish
TRENT	5221.6	5335.4	5278.5	5218.6	5161.7	5101.9	5178.9	5032.5	50.7	Bullish
TRIDENT	25.5	27.0	26.2	25.8	25.0	24.6	24.9	25.9	37.7	Bearish
TORNTPHARM	3230.8	3277.9	3254.3	3219.3	3195.8	3160.8	3136.0	3057.6	54.0	Bullish
TITAN	3193.1	3284.4	3238.7	3159.4	3113.7	3034.4	3075.7	3107.1	43.3	Bearish
TATACHEM	837.5	850.3	843.9	837.4	831.0	824.6	817.5	816.2	42.4	Bullish
TTML	61.1	63.6	62.4	61.4	60.2	59.2	60.6	61.2	40.7	Bearish
TATAMOTORS	690.1	701.0	695.5	687.3	681.8	673.6	673.8	657.3	43.3	Bullish
TVSMOTOR	2346.8	2380.7	2363.7	2336.1	2319.2	2291.6	2299.2	2315.8	40.6	Bearish
UBL	1967.2	2085.3	2026.2	1971.0	1911.9	1856.7	1913.8	1944.6	33.9	Bearish
UNIONBANK	119.2	122.0	120.6	119.5	118.1	116.9	116.6	115.3	36.7	Bullish
UNITDSPR	1377.8	1409.9	1393.8	1372.0	1355.9	1334.1	1359.9	1331.6	63.9	Bullish
UPL	646.9	654.8	650.8	647.5	643.5	640.1	631.2	631.0	62.1	Bullish
ULTRACEMCO	10948.2	11425.4	11186.8	11001.4	10762.8	10577.4	10715.7	10681.4	74.3	Bullish
VBL	548.8	567.7	558.2	549.1	539.7	530.6	523.5	486.8	53.6	Bullish
VEDL	470.8	483.7	477.2	468.7	462.2	453.7	456.2	433.2	44.4	Bullish
VOLTAS	1469.9	1526.5	1498.2	1481.9	1453.6	1437.3	1458.7	1376.9	42.8	Bullish
WHIRLPOOL	984.4	1004.5	994.5	979.9	969.9	955.3	955.0	960.3	68.2	Bearish
WIPRO	268.0	276.3	272.1	269.8	265.7	263.4	263.8	282.9	40.1	Bearish
YESBANK	16.9	17.5	17.2	17.1	16.8	16.6	16.5	17.0	44.3	Bearish
ZEEL	103.2	108.6	105.9	104.1	101.4	99.7	101.2	99.5	34.0	Bullish
ZOMATO	224.5	230.9	227.7	224.8	221.6	218.7	214.3	220.7	61.9	Bearish
ZYDUSLIFE	917.3	932.9	925.1	916.5	908.7	900.2	901.0	891.9	41.2	Bullish

Disclaimer:

This report has been prepared by HDFC Securities Ltd and is solely for information of the recipient only. The report must not be used as a singular basis of any investment decision. The views herein are of a general nature and do not consider the risk appetite or the particular circumstances of an individual investor; readers are requested to take professional advice before investing. Nothing in this document should be construed as investment advice. Each recipient of this document should make such investigations as they deem necessary to arrive at an independent evaluation of an investment in securities of the companies referred to in this document (including merits and risks) and should consult their own advisors to determine merits and risks of such investment. The information and opinions contained herein have been compiled or arrived at, based upon information obtained in good faith from sources believed to be reliable. Such information has not been independently verified and no guaranty, representation of warranty, express or implied, is made as to its accuracy, completeness or correctness. All such information and opinions are subject to change without notice. Descriptions of any company or companies or their securities mentioned herein are not intended to be complete. HSL is not obliged to update this report for such changes. HSL has the right to make changes and modifications at any time.

This report is not directed to, or intended for display, downloading, printing, reproducing or for distribution to or use by, any person or entity who is a citizen or resident or located in any locality, state, country or other jurisdiction where such distribution, publication, reproduction, availability or use would be contrary to law or regulation or what would subject HSL or its affiliates to any registration or licensing requirement within such jurisdiction.

If this report is inadvertently sent or has reached any person in such country, especially, United States of America, the same should be ignored and brought to the attention of the sender. This document may not be reproduced, distributed or published in whole or in part, directly or indirectly, for any purposes or in any manner.

Foreign currencies denominated securities, wherever mentioned, are subject to exchange rate fluctuations, which could have an adverse effect on their value or price, or the income derived from them. In addition, investors in securities such as ADRs, the values of which are influenced by foreign currencies effectively assume currency risk. It should not be considered to be taken as an offer to sell or a solicitation to buy any security.

This document is not, and should not, be construed as an offer or solicitation of an offer, to buy or sell any securities or other financial instruments. This report should not be construed as an invitation or solicitation to do business with HSL. HSL may from time to time solicit from, or perform broking, or other services for, any company mentioned in this mail and/or its attachments.

HSL and its affiliated company(ies), their directors and employees may; (a) from time to time, have a long or short position in, and buy or sell the securities of the company(ies) mentioned herein or (b) be engaged in any other transaction involving such securities and earn brokerage or other compensation or act as a market maker in the financial instruments of the company(ies) discussed herein or act as an advisor or lender/borrower to such company(ies) or may have any other potential conflict of interests with respect to any recommendation and other related information and opinions.

HSL, its directors, analysts or employees do not take any responsibility, financial or otherwise, of the losses or the damages sustained due to the investments made or any action taken on basis of this report, including but not restricted to, fluctuation in the prices of shares and bonds, changes in the currency rates, diminution in the NAVs, reduction in the dividend or income, etc.

HSL and other group companies, its directors, associates, employees may have various positions in any of the stocks, securities and financial instruments dealt in the report, or may make sell or purchase or other deals in these securities from time to time or may deal in other securities of the companies / organizations described in this report. As regards the associates of HSL please refer the website.

HSL or its associates might have managed or co-managed public offering of securities for the subject company or might have been mandated by the subject company for any other assignment in the past twelve months.

HSL or its associates might have received any compensation from the companies mentioned in the report during the period preceding twelve months from the date of this report for services in respect of managing or co-managing public offerings, corporate finance, investment banking or merchant banking, brokerage services or other advisory service in a merger or specific transaction in the normal course of business.

HSL or its analysts did not receive any compensation or other benefits from the companies mentioned in the report or third party in connection with preparation of the research report. Accordingly, neither HSL nor Research Analysts have any material conflict of interest at the time of publication of this report. Compensation of our Research Analysts is not based on any specific merchant banking, investment banking or brokerage service transactions. HSL may have issued other reports that are inconsistent with and reach different conclusion from the information presented in this report.

Research entity has not been engaged in market making activity for the subject company. Research analyst has not served as an officer, director or employee of the subject company. We have not received any compensation/benefits from the subject company or third party in connection with the Research Report.

Please note that HDFC Securities has a proprietary trading desk. This desk maintains an arm's length distance with the Research team and all its activities are segregated from Research activities. The proprietary desk operates independently, potentially leading to investment decisions that may deviate from research views.

HDFC securities Limited, I Think Techno Campus, Building - B, "Alpha", Office Floor 8, Near Kanjurmarg Station, Opp. Crompton Greaves, Kanjurmarg (East), Mumbai 400 042 Phone: (022) 3075 3400 Fax: (022) 2496 5066

Compliance Officer: Murli V Karkera Email: complianceofficer@hdfcsec.com Phone: (022) 3045 3600

For grievance redressal contact Customer Care Team Email: customercare@hdfcsec.com Phone: (022) 3901 9400

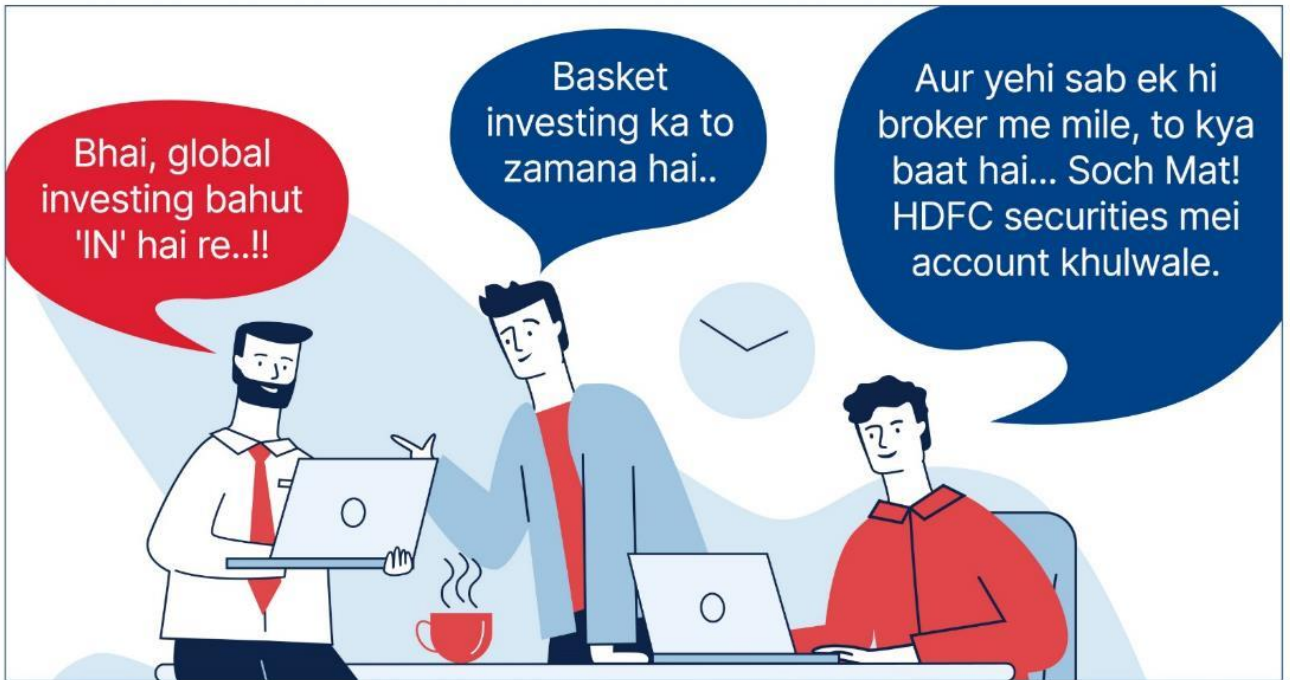
HDFC Securities Limited, SEBI Reg. No.: NSE, BSE, MSEI, MCX: INZ000186937; AMFI Reg. No. ARN: 13549; PFRDA Reg. No. POP: 11092018; IRDA Corporate Agent License No.: CA0062; SEBI Research Analyst Reg. No.: INH000002475; SEBI Investment Adviser Reg. No.: INA000011538; CIN - U67120MH2000PLC152193

Investment in securities market are subject to market risks. Read all the related documents carefully before investing.

Mutual Funds Investments are subject to market risk. Please read the offer and scheme related documents carefully before investing.

Registration granted by SEBI, membership of BASL (in case of IAs) and certification from NISM in no way guarantee performance of the intermediary or provide any assurance of returns to investors.

#HDFCsecMythBusters



**Scan the code to
download our mobile app now!**

Global Investing, Basket Investing are not a Exchange traded product and all disputes related to the distribution activity of Global Investing and Basket Investing will not have access to Exchange investor redressal forum or Arbitration mechanism. Involvement of HDFC securities is restricted to Referral only. HDFC securities does not offer this product directly to customers <https://www.hdfcsec.com/globalinvesting>. Account would be opened after all procedure relating to IPV and client due diligence is completed. Investment in securities market are subject to market risks, read all the related documents carefully before investing. SEBI registration & disclaimers: <https://www.hdfcsec.com/article/disclaimer-1795>.
The information is only for consumption by the client and such material should not be redistributed.

Thank You!